

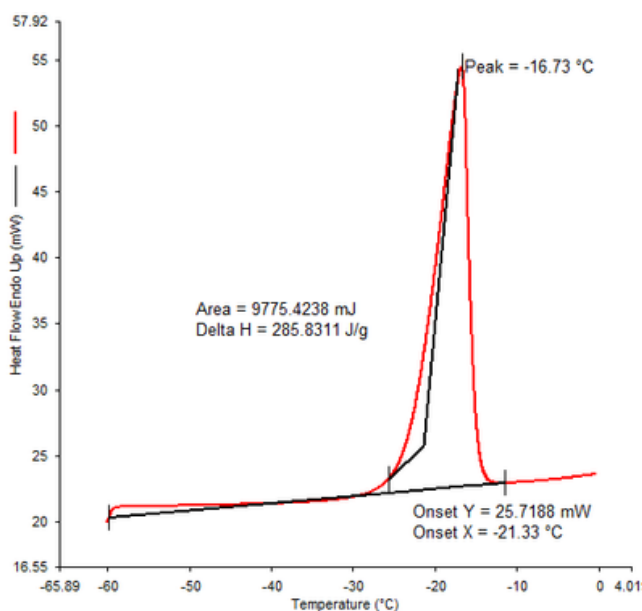


# DURATEMP™ -21C PCM

## Phase Change Material

### DSC Analysis

#### DuraTemp™ -21C



### APPLICATIONS

- i. Thermal energy storage
- ii. Cold chain
- iii. Transportation
- iv. Support safety applicationsv.
- v. Resiliency of biopharma applications
- vi. 100's of other

### KEY FEATURES

- High Energy
- Durable to over 3000+ Cycles
- Non Flammable Inorganic

### PERFORMANCE DATA

Melt Point	-21C
Heat Storage Capacity	285
Specific Heat Liquid	3.05
Specific Heat Solid	3.29
Density Solid	1.24
Density Liquid	1.21
Volume Expansion	1.7%
Heat Conductivity Liquid	.51
Heat Conductivity Solid	.56
Supercooling	<.05