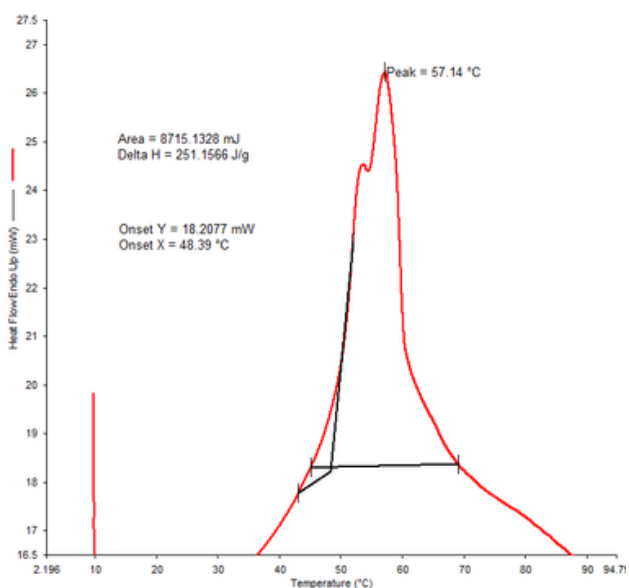




DURATEMP™ 48C PCM

Phase Change Material

DSC Analysis DuraTemp™ 48C



APPLICATIONS

- i. Thermal energy storage
- ii. Cold chain
- iii. Transportation
- iv. Building products
- v. 100's of other

KEY FEATURES

- High Energy
- Durable to over 3000+ Cycles
- Non Flammable Inorganic

PERFORMANCE DATA

Melt Point	48
Heat Storage Capacity	240
Specific Heat Liquid	2.9
Specific Heat Solid	2.1
Density Solid	1.45
Density Liquid	1.33
Volume Expansion	8.9
Heat Conductivity Liquid	0.51
Heat Conductivity Solid	0.62
Supercooling	<.05