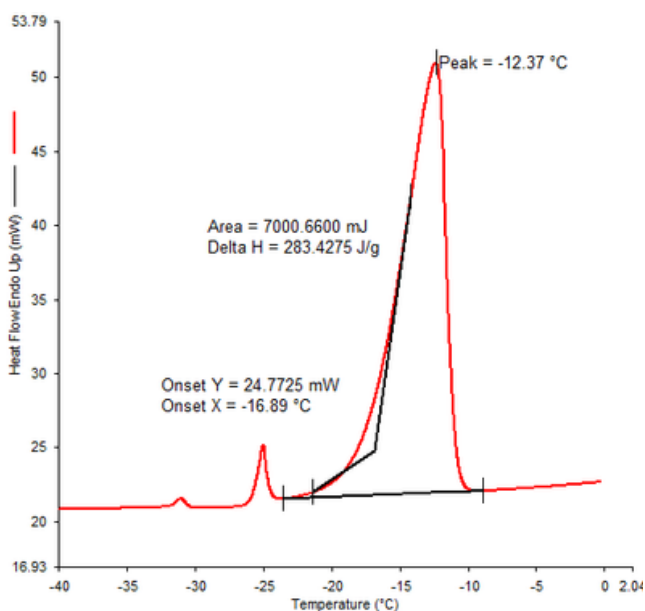




DURATEMP™ -16C PCM

Phase Change Material

DSC Analysis DuraTemp™ -16C



APPLICATIONS

- i. Thermal energy storage
- ii. Cold chain
- iii. Transportation
- iv. Resiliency of biopharma applications
- v. 100's of other

KEY FEATURES

- High Energy
- Durable to over 3000+ Cycles
- Non Flammable Inorganic

PERFORMANCE DATA

Melt Point	-16
Heat Storage Capacity	300
Specific Heat Liquid	3.9
Specific Heat Solid	4.1
Density Solid	1.07
Density Liquid	1.06
Volume Expansion	0.9
Heat Conductivity Liquid	0.54
Heat Conductivity Solid	0.57
Supercooling	<.05